

Transportation

Grade 3

The following question is based on the accompanying documents (1 - 4). Some of these have been edited for the purpose of this task. This question is designed to test your ability to work with historical documents. As you analyze the documents, take into account both the source of the document and the author's point of view.

Directions:

- ◆ Write a well-organized essay that includes an introduction with a topic sentence that answers the essay question (or thesis statement), a body with several paragraphs explaining and supporting your answer and a conclusion.
- ◆ Analyze the documents
- ◆ Use evidence from documents to support your answer
- ◆ Include specific related outside information.

Historic Background:

Transportation varies from community to community. There are many different factors that influence transportation.

Task:

For Part A, read **each** document carefully and answer the question or questions after each document. Then read the directions for Part B and write your essay.

For Part B, use your answers from Part A, information from the documents, and your knowledge of social studies to write a well organized essay. In the essay you should:

Tell how people within different communities around the world travel?

Document 1:



Bedouins riding camels

Living in a Desert - by Alan Fowler

1. According to the picture tell how people travel in the desert.

Document 2:

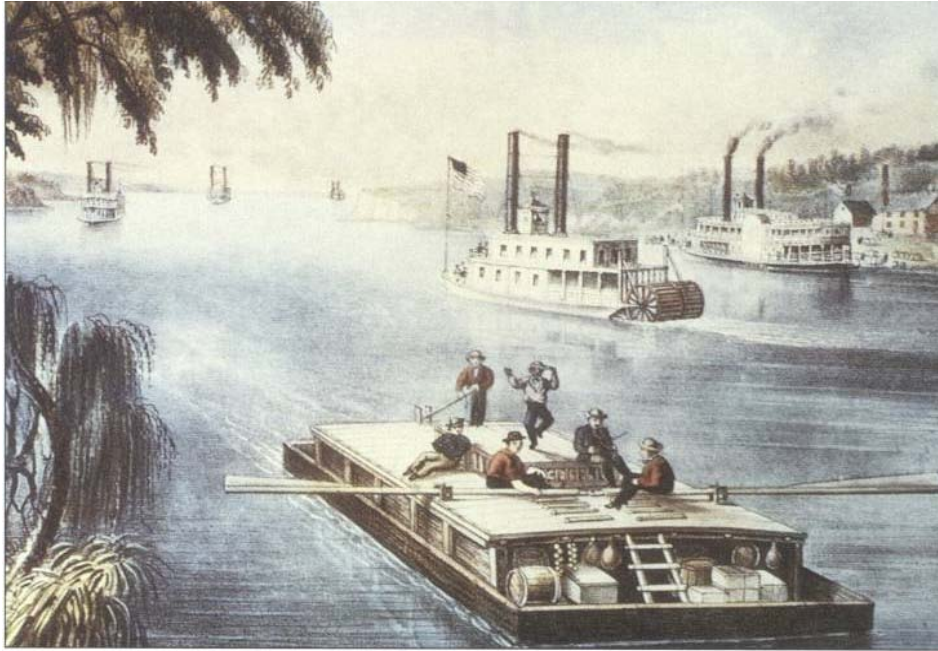


Traveling by canoe

Living In A Rain Forest by Allan Fowler

1. According to the picture tell how people travel in a rainforest.

Document 3:

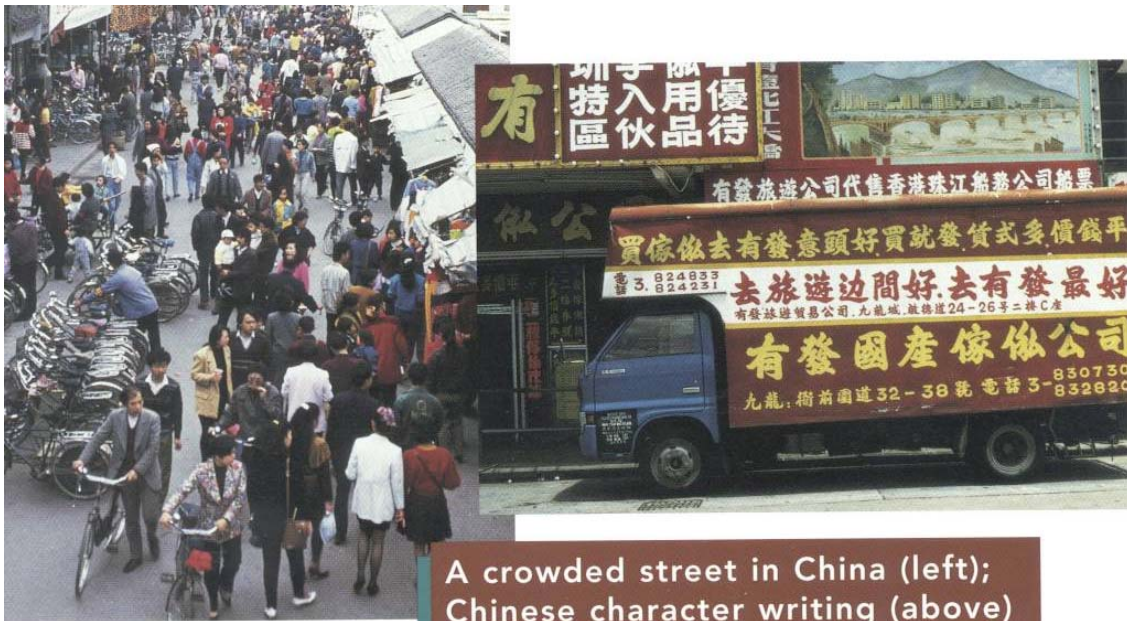


This boat is taking people and goods down a river.

Living Near a River by Allan Fowler

1. According to the illustration how do people move in a river community?

Document 4:



True Book China by Ann Heinrichs

1. According to the picture name two ways people travel in China.
